

# Mission Hill MS | Update

SANTA CRUZ CITY SCHOOLS | PLANNING REVIEW COMMITTEE – 10 SEPTEMBER 2020

10 September 2020

**BARTOS**  
ARCHITECTURE

COLLABORATION  
ADVOCACY  
RESEARCH  
EDUCATION

## Agenda

### **01**

Review Completed Projects

### **02**

Auditorium

- Flooring Complete
- Lighting Fixture
- Upcoming finishes

### **03**

Upcoming Main Building Exterior Façade and Window Project

- To be bid late Fall 2020 Construction Spring 2021

### **04**

New Building

- General Scope

### **05**

Priorities and implementation

# Bond Committee Update

## Past

- ✓ Front Landscape Improvements. Closeout in progress
- ✓ Front Shade Structure and Monument Sign. Closeout in progress.
- ✓ Accessible Student Restroom
- ✓ Roofing Phase 1: Main Building
- ✓ Locker Room Improvements
- ✓ Mod Phase 1: Permanent Partitions
- ✓ Fire Sprinkler Line Replacement
- ✓ Site Security Fencing Complete
- ✓ Site Data Improvements: Complete

## Present

- Site Handrail Replacement (Accessibility). In Progress
- Auditorium Improvements

## Bidding this Fall: Construction Spring

- Exterior Envelope:
  - Replace Windows
  - Paint
  - Roofing Phase 2

## Next

- New Building

# Bond Committee Update

*Designed, engineered, and manufactured with the same attention to detail, quality, and durability that the design community has come to expect from Victor Stanley. This side-door recycling station features side-door hinges that incorporate stainless-steel pins and oil-impregnated bronze bushings, eliminating friction and maximizing its lifespan. An all-in-one solution for promoting recycling and litter containment with 100% domestic and 98% recycled solid steel bar as the major component in its construction. It's just one more way Victor Stanley helps you create the perfect setting for timeless moments.*

## SD-242 RECYCLING STATION

Two 36 gal (136 L) liners and two lids in any combination: standard tapered formed lid, recycle lid and/or slotted lid. Standard decals including top band and lid decals. Bottom recessed pedestal. Latch.

### OPTIONS

Keyed lock (US Patent 6,339,944 B1). Dual-flow lid. Dome lid (ashtrays available). Convex lid (self-close door available). Rain bonnet lid (ashtrays available). Enclosed dome lid (ashtrays available). Half-Moon liners. Galvanized steel liner. Custom decals and plaques.



Tapered formed lid with decals.



Recycle lid with decals.



Slotted lid with decals.



### DUAL-FLOW LID

The Dual-Flow lid is available for all 36 gal (136 L) models. Paired with the Half-Moon liners, these lids allow for mixed recycling and waste streams in a single receptacle. Special hole combinations and custom decals accommodate different recycling needs.



### ENCLOSED DOME LID

The optional enclosed dome lid is a tidy alternative to the dome and rain bonnet lids. Paired with the Half-Moon liners, these lids allow for mixed recycling and waste streams in a single receptacle.

*See product specifications for further details. Drawings are not to scale. Our TGIC powder-coating averages 8-10 mils (200-250 microns) thick and is applied in-house to ensure the highest level of quality. Offered in 12 standard and metallic colors, plus a full range of RAL colors with available color matching. Additional cost may apply.*

1.800.368.2573 (USA + Canada)

Copyright 2014 Victor Stanley, Inc.® All rights reserved.



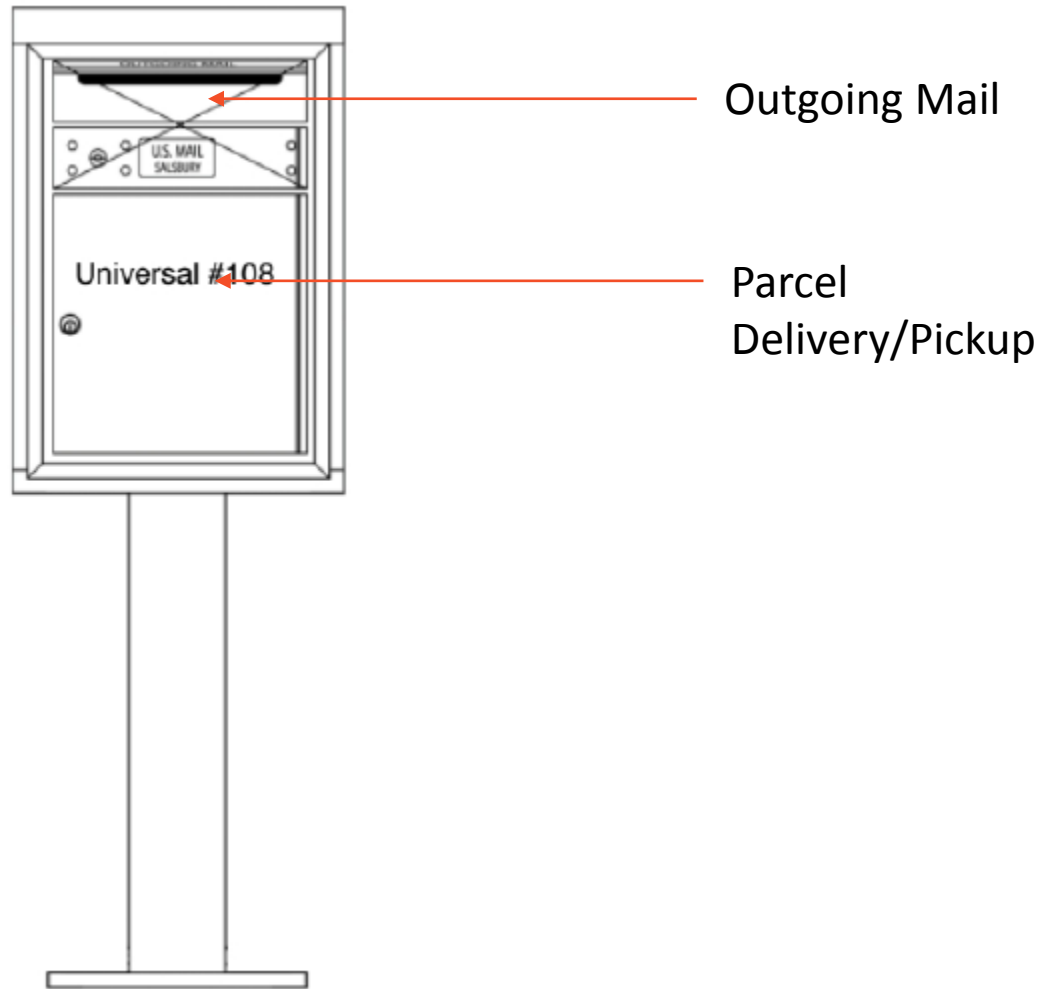
Donated by Bartos Architecture

Recycling Center

10 September 2020

**BARTOS**  
ARCHITECTURE

# Bond Committee Update

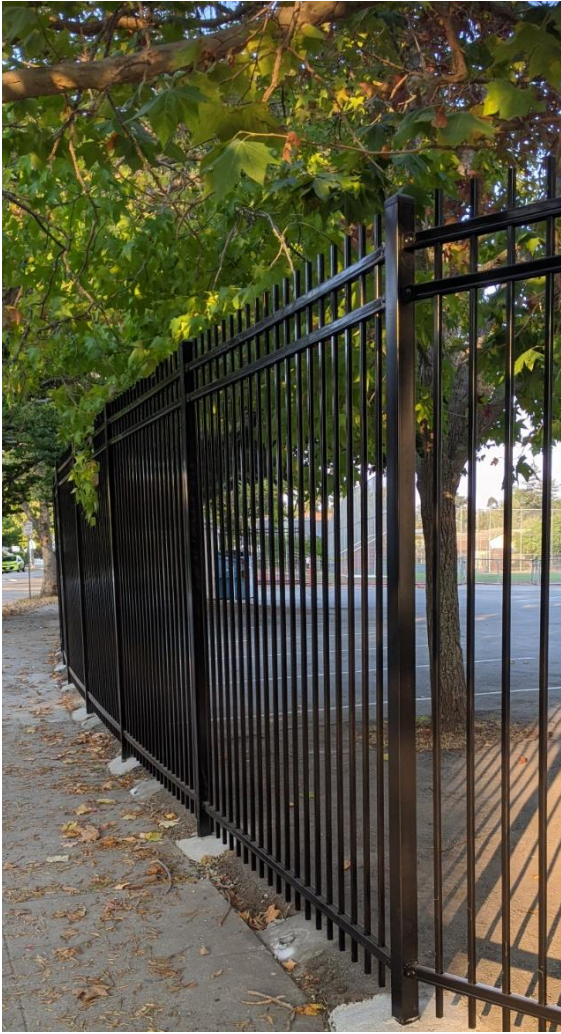


Post Box

Donated by Bartos Architecture



# Principal Meeting/Update



New Secure/Decorative Fencing



*Upcoming Scope*

New Ceiling Tiles

New Lighting

New Shades

New Acoustical Panels

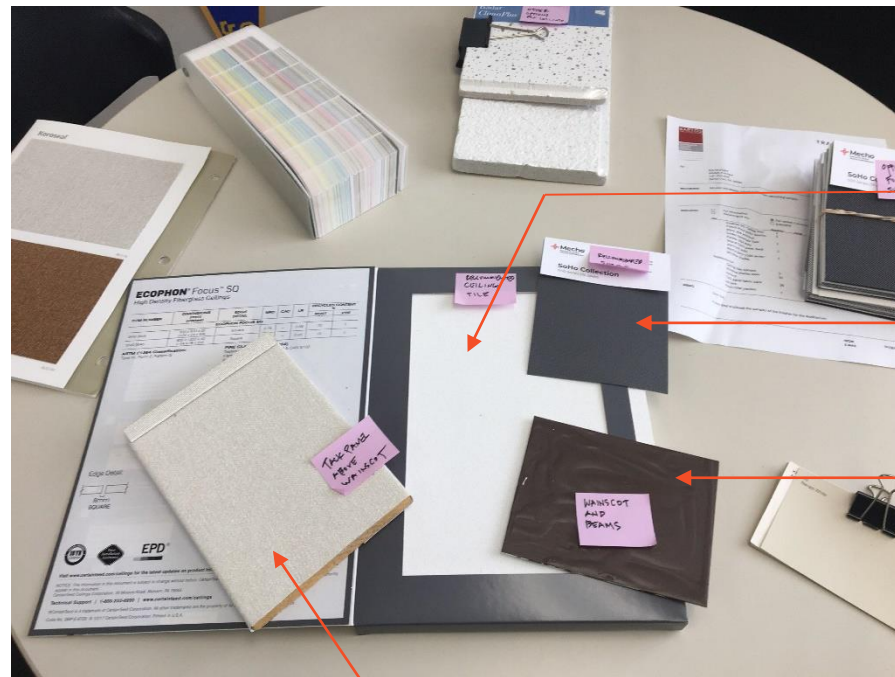
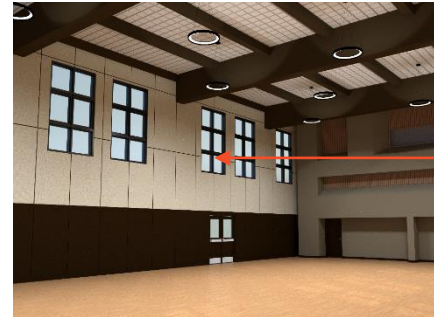
New Paint

*Completed Scope*

New Floor

# Auditorium Improvements





Ceiling Tile

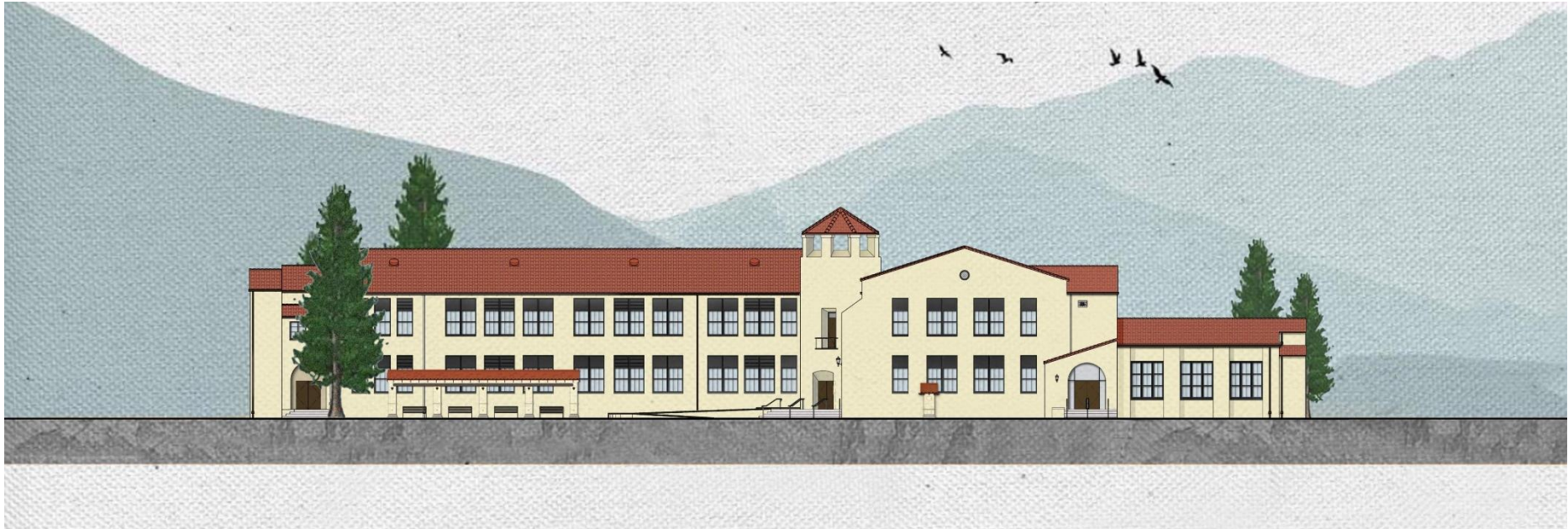
Roller Shade

Beam Trim and Wainscot

Wall tack panel

## Auditorium Improvements



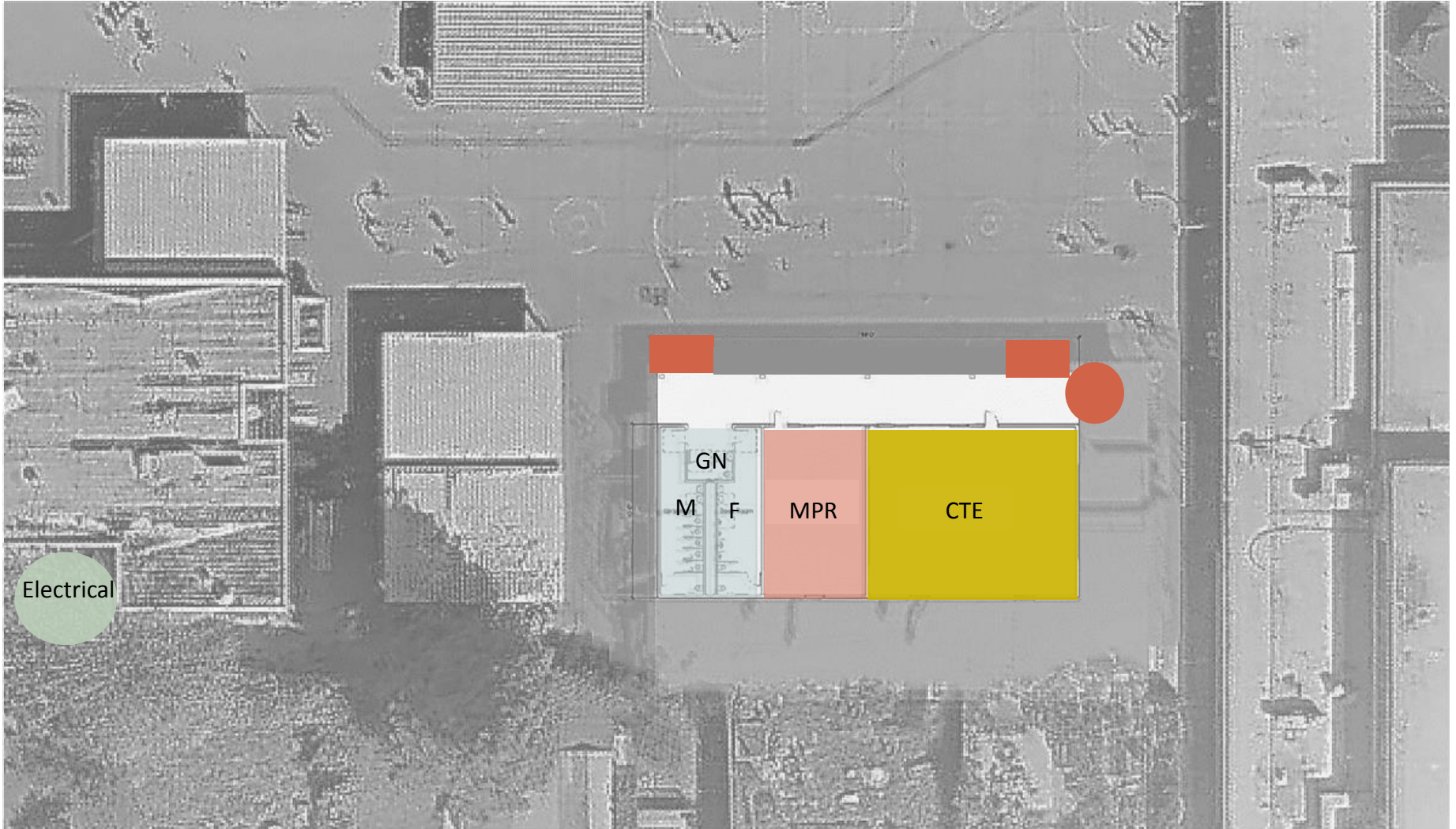


## “Envelope Project”

- Window Replacement
- Roof Replacement Phase 2
- Exterior Paint
- Auditorium Finishes

← Project to be bid late Fall 2020

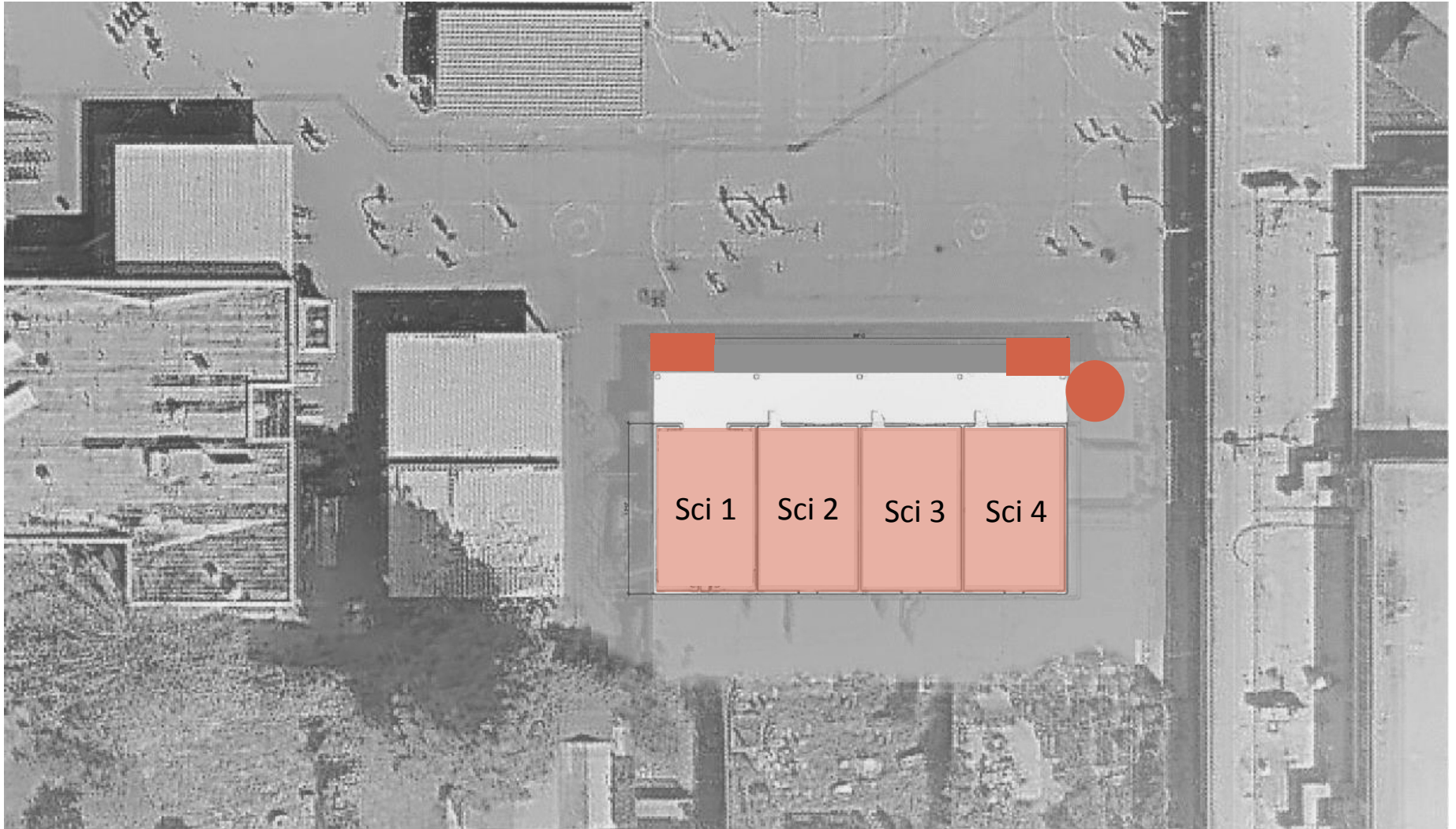
# Principal Meeting/Update



First Floor



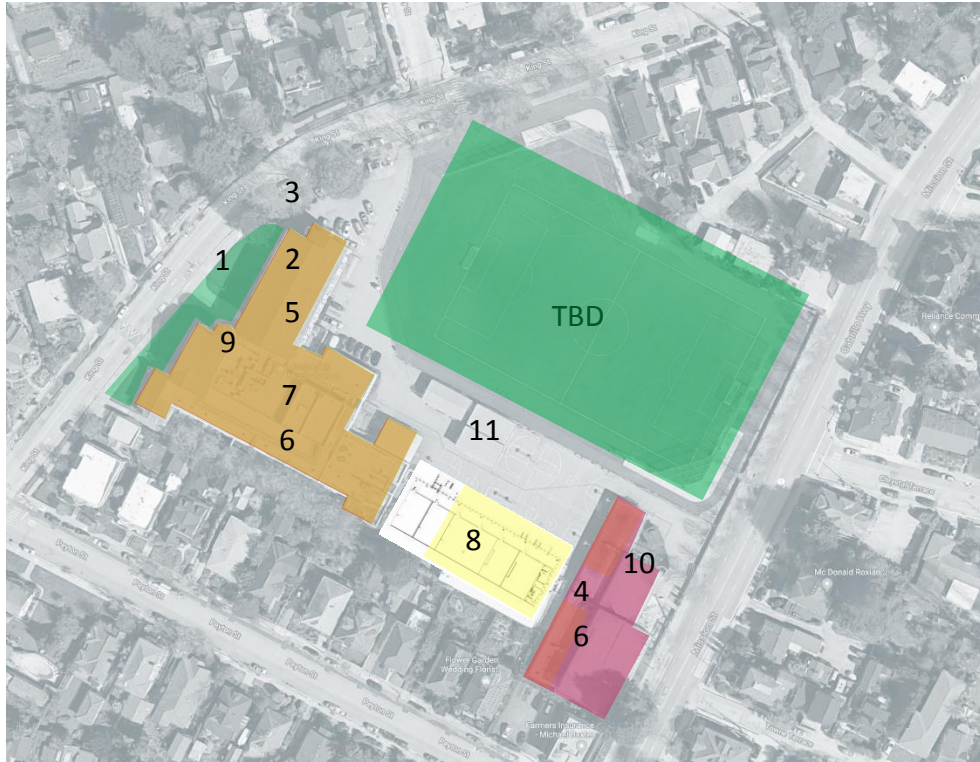
# Principal Meeting/Update



Second Floor

# Master Plan - Revised

## Current Multi-phase master plan



1 Landscape   Shelter   Access	\$1,195,615
2 Roofing Phase 1: Main	\$1,593,866
3 Exterior Site Security (Fencing)	\$100,000
4 Gym Phase 1: Locker Rooms	\$184,029
5 Mod Phase 1: Partitions	\$322,216
<del>6 Roofing Phase 2: Gym + Main</del>	<del>\$2,131,223</del>
7 Mod Ph 2: Auditorium	\$300,000
Replace existing Playfields	\$3,000,000
8 New Modular CR Building	TBD
9 Mod Ph 3: Main Building (Envelope)	TBD
10 Gym Phase 2	N/A
11 Site Improvements	\$269,276
Utility Infrastructure	\$150,000
Site Power Upgrade	TBD
Card access security system	\$165,000
Data Infrastructure Improvements	\$575,782
Multi Project Overhead	\$952,206
Furniture	\$373,800
Electrical Service Upgrade	TBD

Total \$9,154,790

Bond Resource	\$17,648,740
DF Resource:	\$283,684
<b>Total Resource w/out state funds:</b>	<b>\$17,932,424</b>

### Funding Dependent | Future (1.11M +/- of State funds)

- Gymnasium Phase 2 – Reconfiguration and improvements
- Site Improvements (portable removal)
- Some components of Envelope project (alternate bids)



## Agenda

### **01**

Review Completed Projects

### **02**

Auditorium

- Flooring Complete
- Lighting Fixture
- Upcoming finishes

### **03**

Upcoming Main Building Exterior Façade and Window Project

- To be bid late Fall 2020 Construction Spring 2021

### **04**

New Building

- General Scope

### **05**

Priorities and implementation

# Bond Committee Update

End

# Principal Meeting/Update



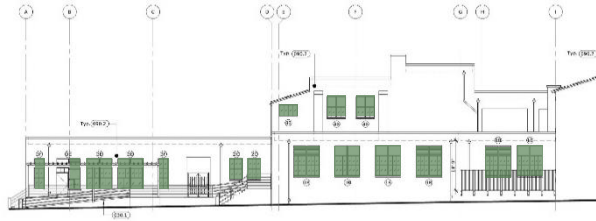
- Fencing Improvement: *Complete*
- Roof Replacement
- Classroom Improvements
- Window Replacement
- Entry Reconfiguration
- HVAC Improvements
- Front Landscape
- Classroom HVAC Improvements
- Exterior Painting
- Main Building Modernization
- Auditorium Improvements:**
- Floor Replacement: *Complete*
- Refinishing: *Summer 2020*
- Lighting: *Summer 2020*

- Play Field Improvements
- Courts/ Parking
- Entry Addition/ Storage
- Locker Rooms: Refinish Flooring
- Locker Room Improvements
- Gymnasium Improvements
- New Classroom Building

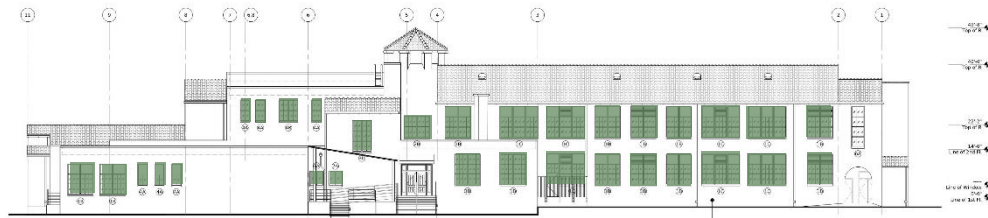
- Planning
- In Progress
- Complete

Mission Hill Middle School  
Santa Cruz City Schools

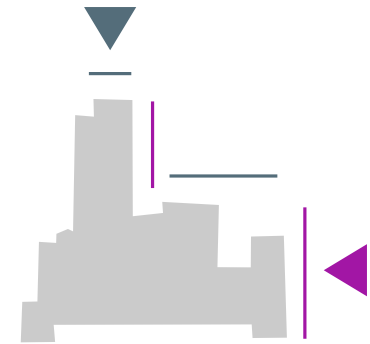




▲ Partial North Elevation: Looking from Sports Field

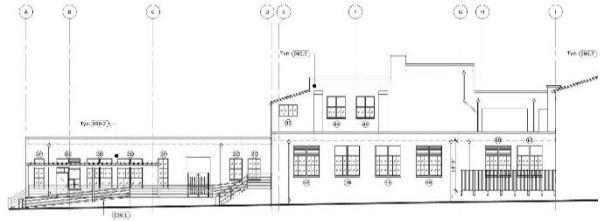


▲ East Elevation: Looking from Mission Street

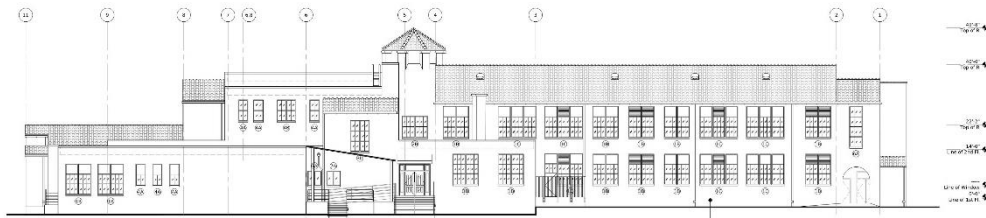


Windows: Alternate

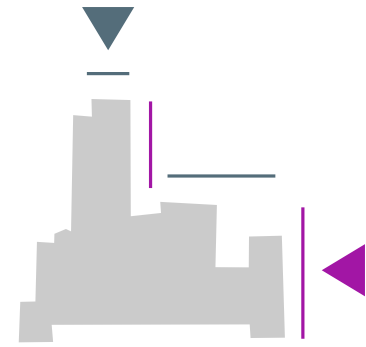




▲ Partial North Elevation: Looking from Sports Field

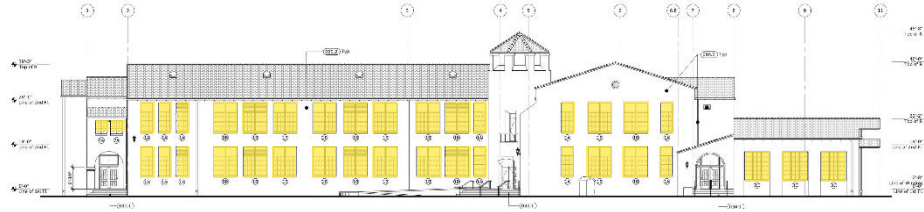


▲ East Elevation: Looking from Mission Street

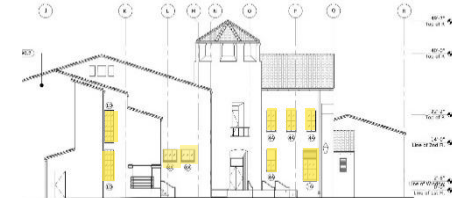


Windows: Alternate Bid

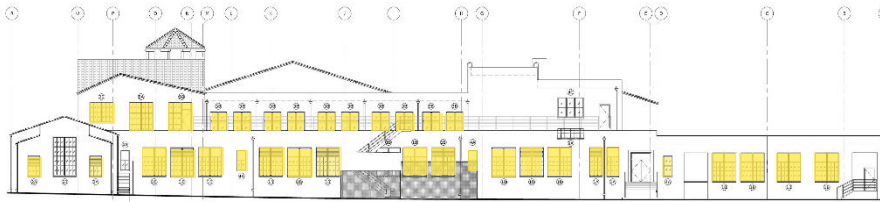
# Bond Committee Update



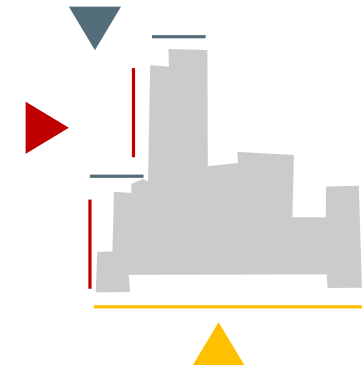
▲ West Elevation: Looking from King Street



▲ Partial North Elevation



▲ South Elevation: Looking from Side

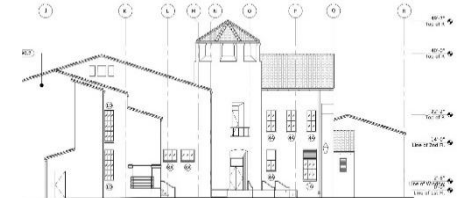


Windows: Base Bid

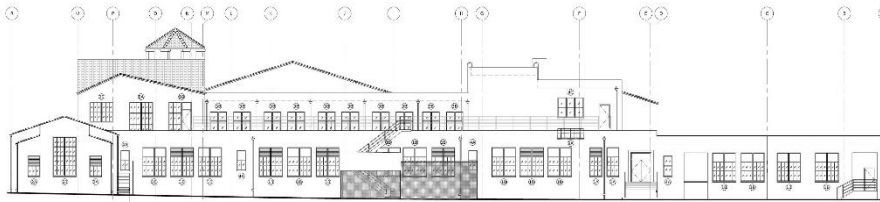
# Bond Committee Update



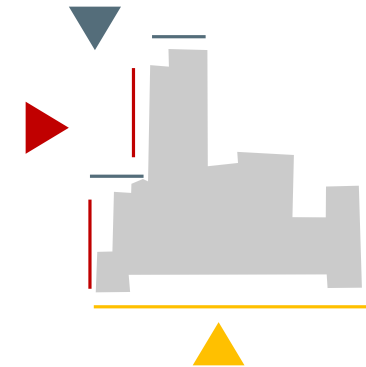
▲ West Elevation: Looking from King Street



▲ Partial North Elevation



▲ South Elevation: Looking from Side



Windows: Base Bid